



FOREST FIRE

News June 5, 2023

5th edition

WAW003 – Wildland Fire Update



AFFES staff discussing an operational plan - June 4, 2023.














Monday's WAW003 Weather Forecast



TODAY: A mix of sun and cloud today with smoke and haze mixed in. Winds will be light and northeasterly up to 10-20km/h, some gusts over 25km/h. RH values will fall to around 25-30%, barely recovering to the 60% range overnight. High 23C.

OUTLOOK: Broad high pressure will stay overhead maintaining sunny to partly sunny skies with smoke and haze likely persisting. Winds still light and northeasterly at 10-20km/h, potential gusts near 30km/h. RH values of 15-25%. High near 22C.

Wawa's Weather Forecast

▼ Forecast						Hourly Forecast	Alerts	Jet Stream
Mon 5 Jun	Tue 6 Jun	Wed 7 Jun	Thu 8 Jun	Fri 9 Jun	Sat 10 Jun	Sun 11 Jun		
 23°C Mainly sunny	 21°C Sunny	 21°C Sunny	 21°C Sunny	 23°C A mix of sun and cloud	 14°C 60% Chance of showers	 15°C 30% Chance of showers		
Tonight	Night	Night	Night	Night	Night			
 8°C Clear	 7°C Clear	 7°C Clear	 8°C Cloudy periods	 9°C 30% Chance of showers	 7°C 30% Chance of showers			

▼ Forecast issued: 5:30 AM EDT Monday 5 June 2023



SPECIAL AIR QUALITY STATEMENT



5:15 a.m. EDT Monday 5 June 2023

High levels of air pollution have developed due to smoke from forest fires.

Smoke plumes from local forest fires as well as forest fires in Quebec have resulted in deteriorated air quality.

Air quality and visibility due to wildfire smoke can fluctuate over short distances and can vary considerably from hour to hour.

For more details, please consult www.canada.ca/en/environment-climate-change/services/air-quality-health-index/wildfire-smoke.html.

Wildfire smoke can be harmful to everyone's health even at low concentrations. Continue to take actions to protect your health and reduce exposure to smoke.

People with lung disease (such as asthma) or heart disease, older adults, children, pregnant people, and people who work outdoors are at higher risk of experiencing health effects caused by wildfire smoke.

Stop outdoor activities and contact your health care provider if you or someone in your care experiences shortness of breath, wheezing (including asthma attacks), severe cough, dizziness or chest pains. Stay inside if you are feeling unwell and experiencing symptoms.

Keep your indoor air clean. Keep your doors and windows closed if the temperature in your home is comfortable. Use an air purifier with a High Efficiency Particulate Air (HEPA) filter in a room where you spend a lot of time. Avoid air purifiers that produce ozone. Check the filter and change it if required. For more information visit <https://www.canada.ca/en/health-canada/services/publications/healthy-living/using-portable-air-cleaner-wildfire-smoke.html>.

Take a break from the smoke by temporarily relocating or finding a location in your community with clean, cool air such as a library, shopping mall or community centre. Contact your local health or municipal authorities for more information.

If you must spend time outdoors, a well-fitted respirator type mask (such as a NIOSH certified N95 or equivalent respirator) that does not allow air to pass through small openings between the mask and face, can help reduce your exposure to the fine particles in smoke. These fine particles generally pose the greatest risk to health. However, respirators do not reduce exposure to the gases in wildfire smoke. It is important to listen to your body and reduce or stop activities if you are experiencing symptoms.

Be sure to check on people in your care and those around you who may be more susceptible to smoke.

Pay attention to information and direction from your local authorities and evacuate if told to do so.

Review your wildfire smoke plan and make sure you have enough medical supplies if the smoke continues to impact your community. Contact your health care provider if your condition is not improving.

Be aware of your mental health. It is normal to feel anxious or isolated during a smoke event. If you experience any feelings of stress, anxiety, or depression, contact your mental health care provider for advice or visit <https://www.wellnesstogether.ca/en-CA>.

Visit www.airhealth.ca for information on how to reduce your health risk and your personal contribution to pollution levels, as well as for current and forecast AQHI values.

Please continue to monitor alerts and forecasts issued by Environment Canada.

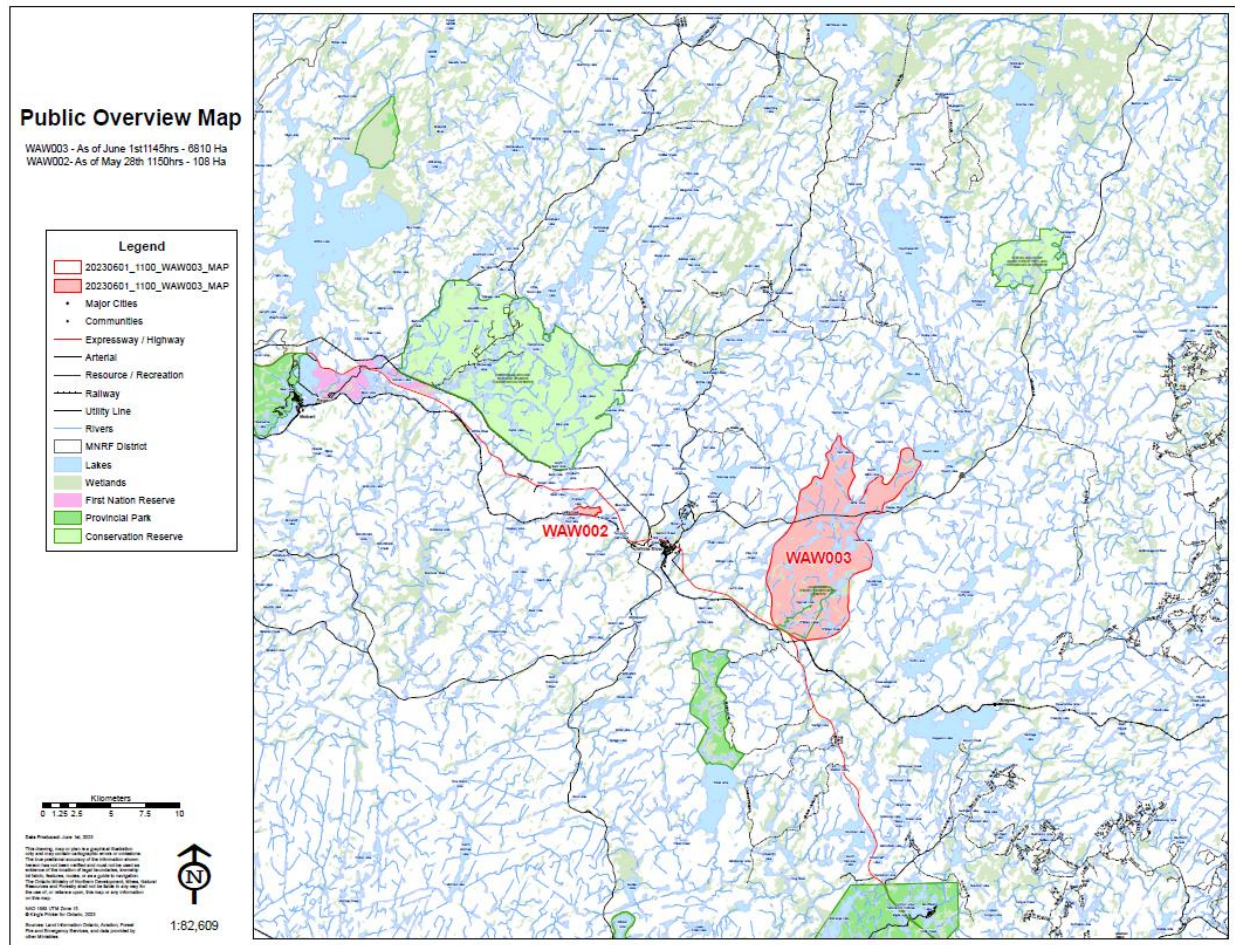
Issued by Environment Canada and the Province of Ontario

[White River, ON - 7 Day Forecast - Environment Canada \(weather.gc.ca\)](https://weather.gc.ca)

Current Fire Situation:

- Wawa 3 was confirmed during the afternoon of May 27th along TransCanada highway 17 by the Depew River. The cause of the fire is currently under investigation.
- The Brown Incident Management Team (IMT) is managing Wawa 3. This is an Ontario Type 1 IMT. An Incident Command Post has been established for the IMT.
- The fire status is Not Under Control (NUC).
- The most up-to-date fire size is 6810.67 ha.
- Observed fire behaviour for Wawa 3 was typically low (fire intensity class 1-2) on June 4th which was supported by the recent 2-6 mm of precipitation on the incident.
- There are 7 helicopters, 13 Fire Ranger crews and 5 type-2 crews assigned to Wawa 3 and additional resources have been requested.
- To prioritize the safety of both MNRF personnel and the public, access to the White River Community Center will be restricted to authorized personnel only. This has been implemented due to the increased presence of MNRF fire personnel and increased traffic in the area.
- Priorities for Wawa 3 are to utilize air support on the more active areas of the fire to limit spread. Crews are actively working on fire suppression. Bucketing helicopters, service, and transport helicopters are working on the fire.
- A moderate to extreme fire hazard remains across the northeastern region. Recent lightning has resulted in several new fires of various sizes over the last 24 hours. This has increased the demand for fire resources across the province.
- Despite varying amounts of precipitation in recent days, amounts are scattered, providing only short-term relief in many areas and the hazard will rebound quickly under forecasted conditions.
- Currently there is an information board located at the Wawa Grocery store. With more information boards being established.
- To see a map of all active fires visit: <https://www.ontario.ca/page/forest-fires>.

Latest Fire Perimeter Map



Implementation Order

Travel, use and access Restrictions in the Northeast Region - MNRF Chapleau-Wawa District:

Under the Emergency Area Order EAO-2023-01 declared on May 31, 2023, the Ministry of Natural Resources and Forestry, Chapleau-Wawa District has put in an Implementation Order for the WAW003 fire to protect public safety and to facilitate effective fire suppression, effective Saturday June 1 @ 7am local time until further notice.

The following restrictions listed below and as outlined on the Implementation Order map, are now in effect until further notice.

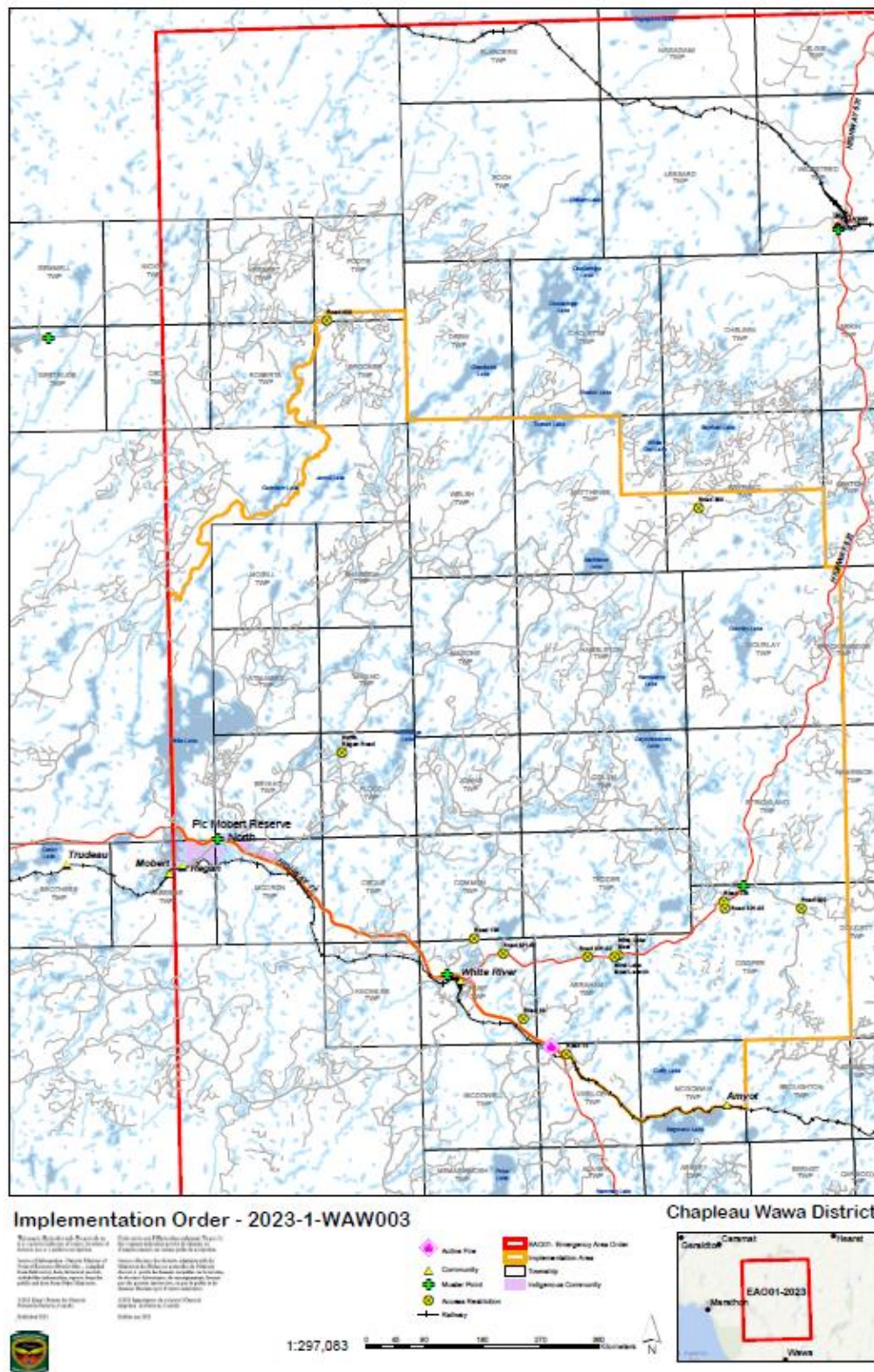
All travel and use of the following areas is prohibited unless authorized by a Travel Permit issued by the Chapleau-Wawa District Ministry of Natural Resources and Forestry (MNRF):

- 400 south of where Road 400 intersects the White River Forest Unit boundary
- Road 300 south of the intersection of Road 300 and Road 350,
- Road 500 west of the intersection of Road 500 and Road 550,
- Road 226 west of the intersection of Road 226 and Hwy. 631,
- "Mink Lake East" Road north of intersection of "Mink Lake East" Road and Hwy. 631,
- "Mink Lake Boat Launch" Road north of intersection of "Mink Lake Boat Launch" Road and Hwy. 631,
- Operational Road 631-02 north of intersection of Road 631-02 and Hwy. 631,
- Operational Road 631-01 (aka. Tower Road) north of intersection of Road 631-01 and Hwy. 631,
- Road 100 north of intersection of Road 100 and the Picnic Lake Road,
- North Reagan Road north of intersection of North Reagan Road and Road 50,
- Road 10 east of intersection of Road 10 and Hwy 17
- Road 99 east of intersection of Road 99 and Hwy 17
- Operational Road 631-05 east of intersection of operational Road 631-05 and Hwy 631

For more information on the travel and use restrictions, see the Implementation Order Map.

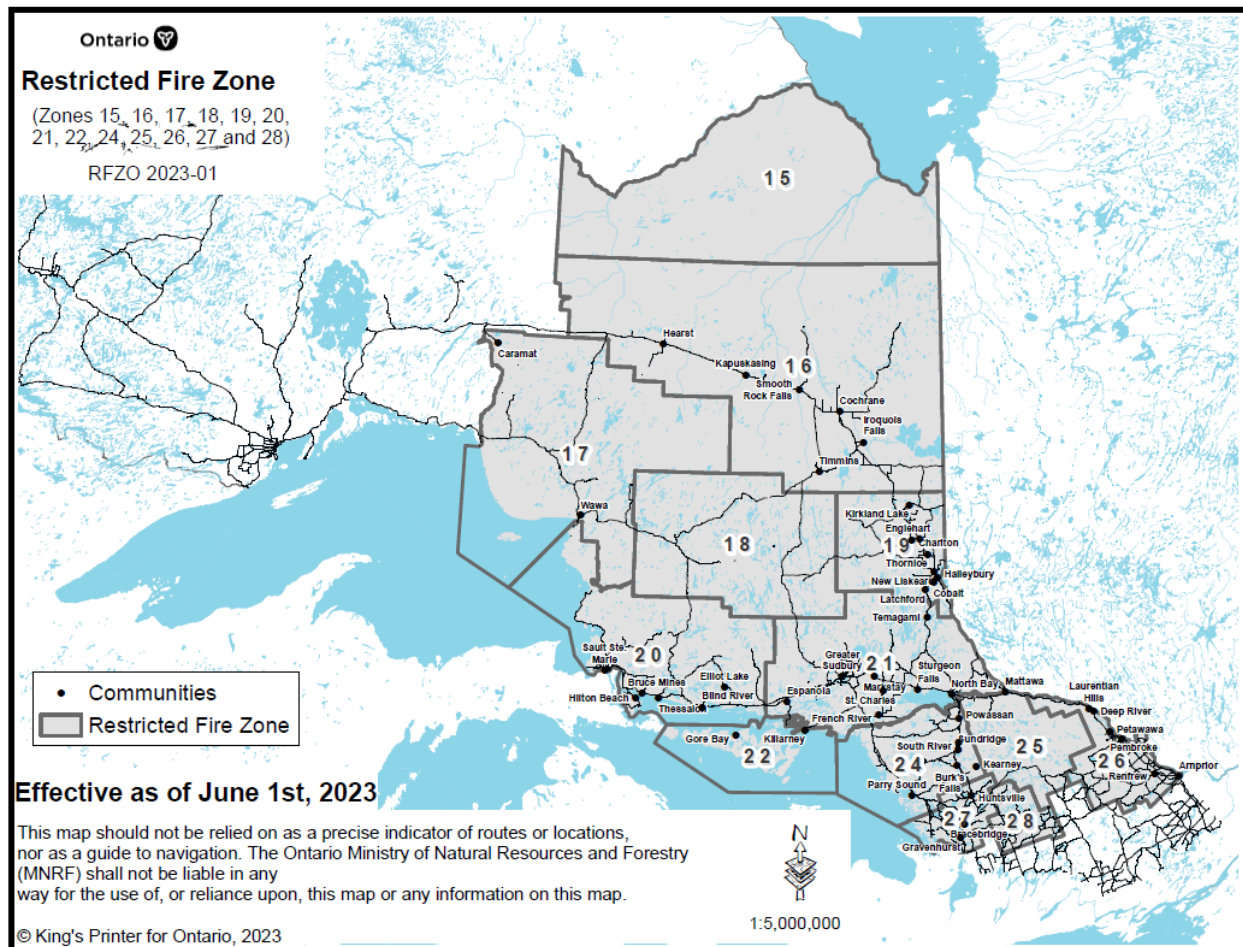
If you have any questions or require travel permits, please contact the Chapleau-Wawa District Office at 705-856-2396.

Implementation Order Map



Restricted Fire Zone

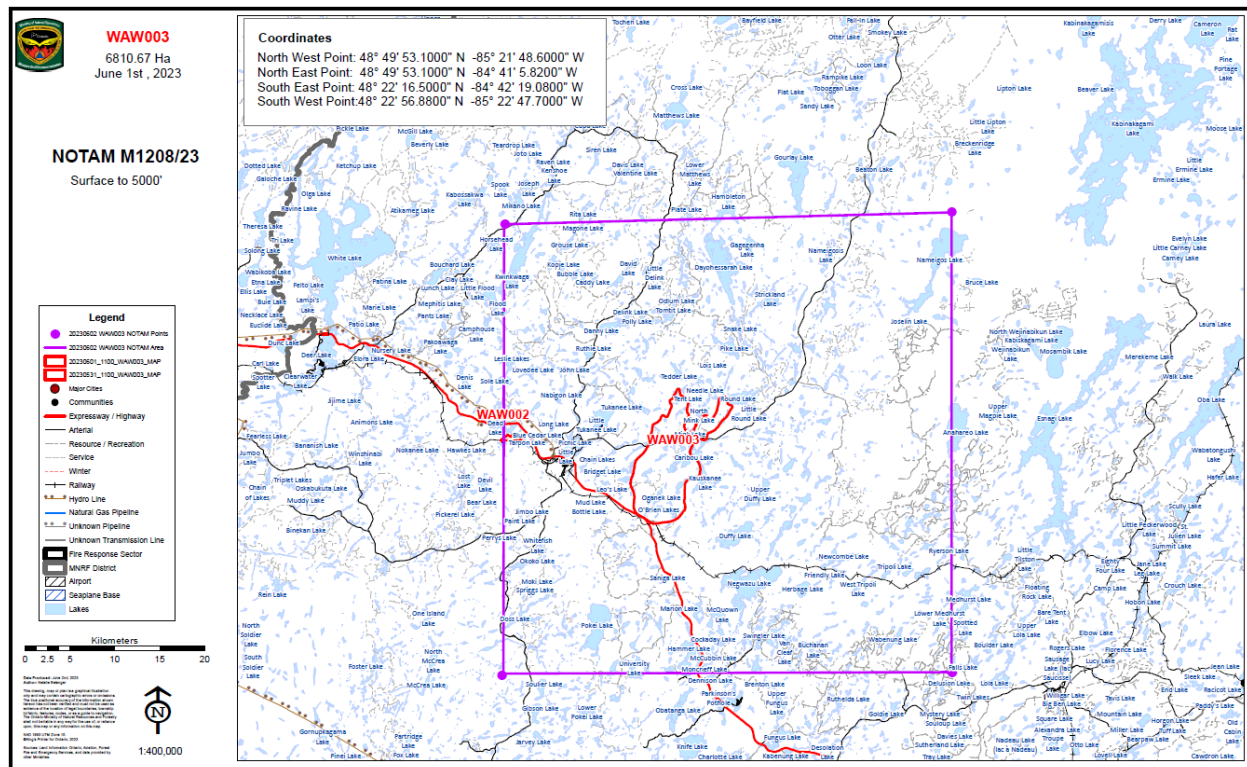
Due to high to extreme fire hazard, the commitment of resources to existing fires and the potential for resource shortages to occur, a Restricted Fire Zone Order is required for the Northeast Fire Region (Restricted Fire Zones 15-22, 24-28). The area impacted is from Georgian Bay west of Gravenhurst to the Quebec border east of Arnprior, north to James Bay, west along the Albany River and then south to Marathon, continuing along the Georgian Bay back to Gravenhurst and includes Manitoulin Island. This order is required to reduce the number of new human-caused wildfires. As we are expecting the hazard to increase into the foreseeable future, along with the potential for problematic fires to exist.



NOTAM

- A reminder that NOTAMs remain in place surrounding all active forest fires. **NOTAMs (Notice to Airmen):** [Section 601.15 of the Canadian Aviation Regulations \(CARs\)](#) states that the **airspace around forest fires is restricted to forest fire suppression aircraft only**, specifically airspace within 5 nautical miles, up to an altitude of 3000 feet above ground level is restricted to forest fire suppression aircraft only. Pilots are reminded that NOTAMs concerning forest fires can be found in the Flight Information Region (FIR) section when flight planning.
- NOTAM M1208/23 is also in place. Please check for the most updated NOTAMs regularly.
- For more information about drones, waterbombers and restricted airspace during forest fires please visit:

<https://www.ontario.ca/page/drones-waterbombersrestricted-airspace-during-forest-fires>



Did You Know?

Fire condition is described using the Intensity Class system. There are 6 classifications for wildfires. As fire's behaviour increases so does the intensity.

Intensity Class 1

Very little if any visible open flame; smouldering.

Intensity Class 2

Low vigour surface fire. Some open flame, not very active or creeping.

Intensity Class 3

Moderately vigorous surface fire. Single tree may torch.

Intensity Class 4

Highly vigorous surface fire with single tree or clumps of trees torching.

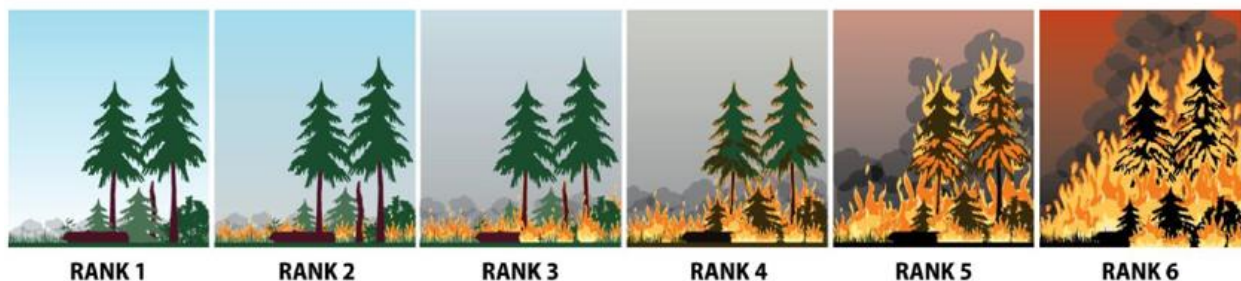
Intensity Class 5/6

Extremely vigorous surface fire or active crown fire. Major fire runs are probable.

Fire Size

Hectares (ha) are the unit of measurement used by the MNRF for fire size description.

1 football field = approximately 1 ha.



(Picture Credit: <https://www2.gov.bc.ca/gov/content/safety/wildfire-status/about-bcws/wildfire-response/fire-characteristics/rank>)

Smoke Concerns

Due to unsettled weather, there may be an increase in the amount of dense smoke from Thursday evening through to Saturday until there is a shift in wind direction in the White River area. To find more information or track smoke drift from active wildland fires, visit www.firesmoke.ca.

If you have questions or concerns about smoke and your health, please contact TeleHealth Ontario at 1-866-797-0000.

Contact Numbers and Online Information

For more information about travel restrictions: 705-465-2087

For general information about the fire situation call the Northeast Region Wildland Fire Information Hotline: 1-888-220-7242

For fire information about WAW003 call the Brown Incident Management Team Fire Information Officer, Maurice Lecours, for WAW003 at 708-856-4735

For information about highway closures: 5-1-1

If you would like to receive this newsletter via email, please contact:

affes.communications@ontario.ca



FOLLOW: [@ONforestfires](https://twitter.com/ONforestfires) | [@ONfeudeforet](https://twitter.com/ONfeudeforet)



WEB: ontario.ca/forestfire | ontario.ca/incendiedeforet



CALL: Fire Updates 1-888-220-7242 | **TRAVEL PERMITS:** 705-465-2087

WAW003 Fire Updates 705-856-4735